

Head Office

Edmonton, AB, Canada
Suite 1800
10405 Jasper Avenue
T5J 3N4

Main: +1-780-448-1010
Fax: +1-780-448-9191
www.matrikonopc.com

OPC Support:

+1-877-OPC-4-ALL
+1-780-945-4011
support@matrikonopc.com
www.opcsupport.com

OPC Sales:

+1-780-945-4099
drivers@matrikonopc.com

OPC Training:

+1-780-945-4011
training@matrikonopc.com
www.opctraining.com

Regional Offices**Texas/Louisiana**

+1-713-490-3737
houstonopc@matrikonopc.com

Germany

+49-221-96977-0
europa@matrikonopc.com

Australia

+61-8-9315-0100
asiapacific@matrikonopc.com

United Kingdom

+44-1629-580886
uk@matrikonopc.com

Middle East

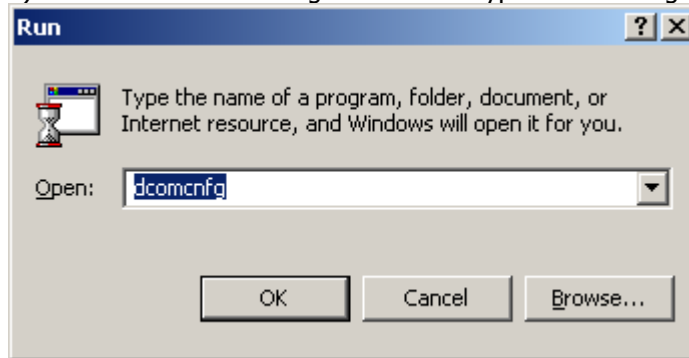
+973-3996-9393
middle-east@matrikonopc.com

Windows NT/2000 DCOM Configuration For OPC

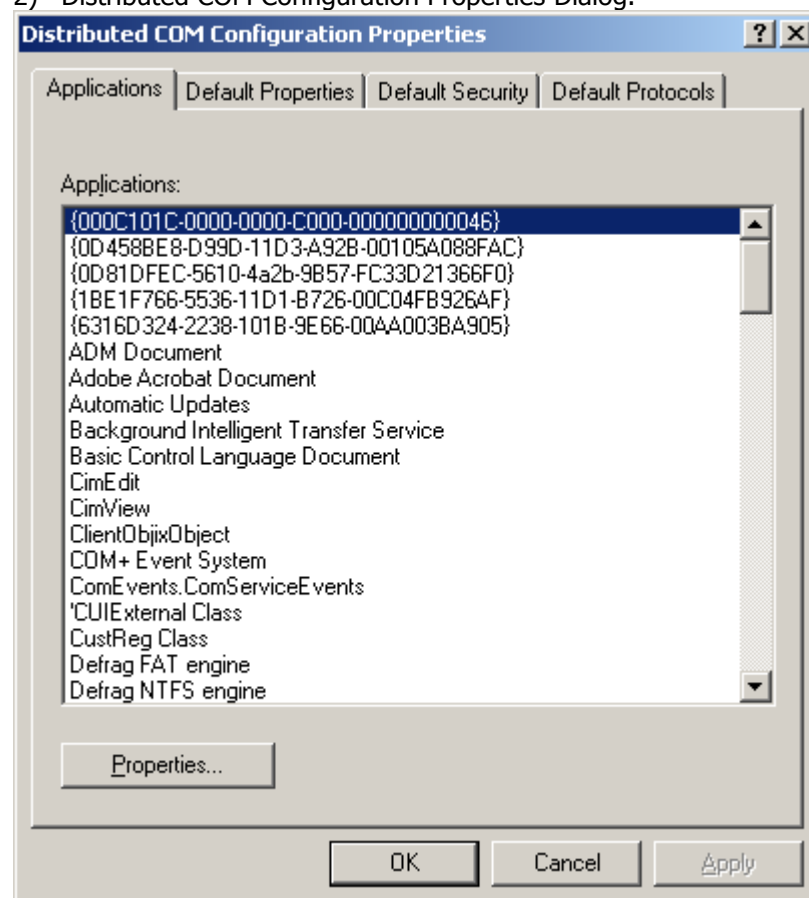
NOTE: These directions will open up DCOM to all users.

NOTE: These steps are used to make sure that communication can be established. After these steps have been followed to establish communication, DCOM permissions can be tightened to allow only the necessary users.

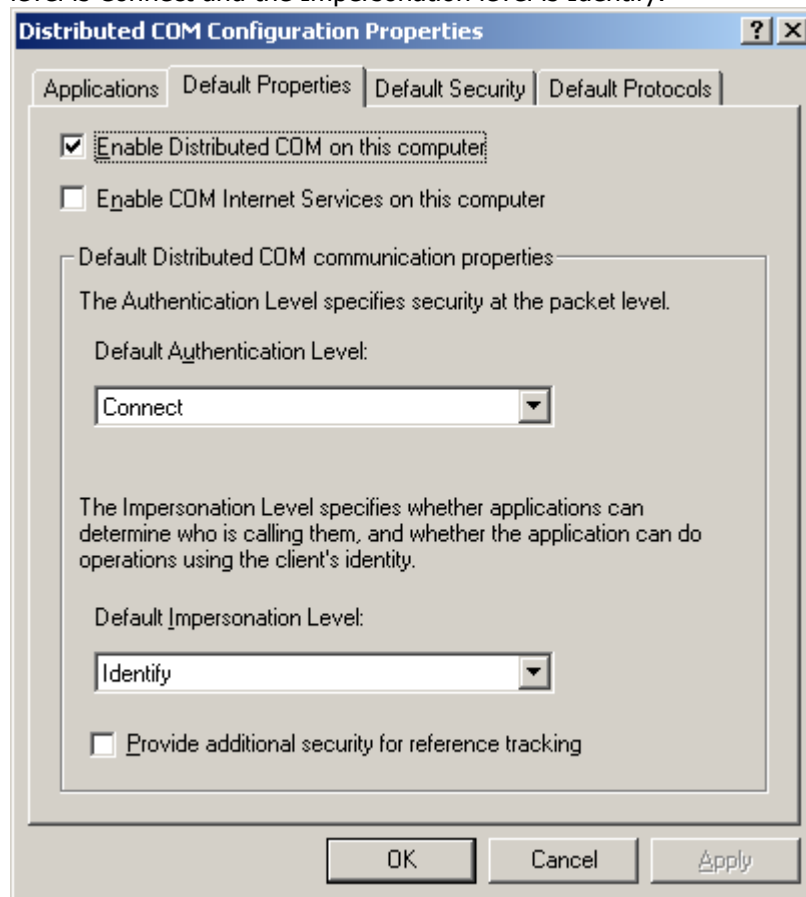
1) From the start menu go to run and type in dcomcnfg.



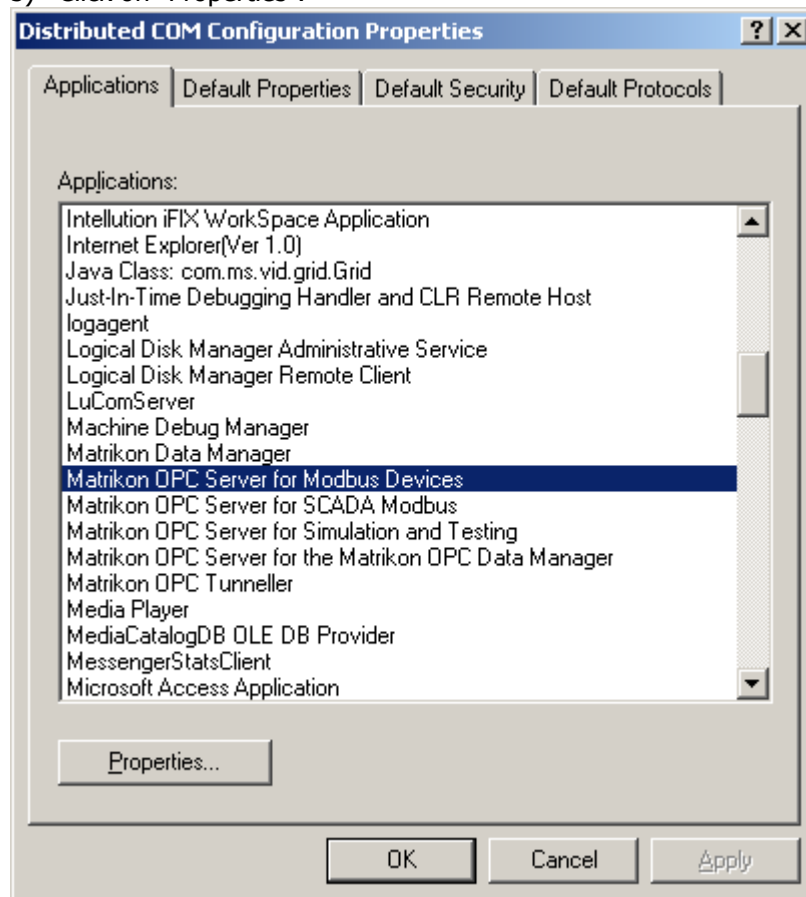
2) Distributed COM Configuration Properties Dialog.



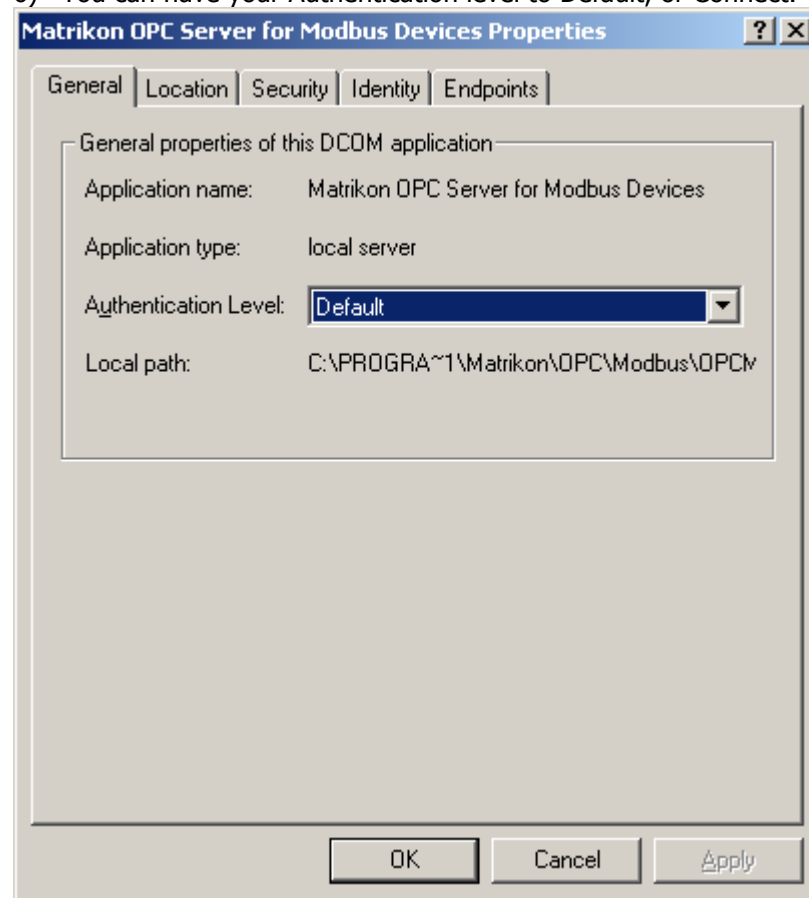
3) Under the Default Properties Tab: Make sure that DCOM is enabled, the authentication level is Connect and the Impersonation level is Identify.



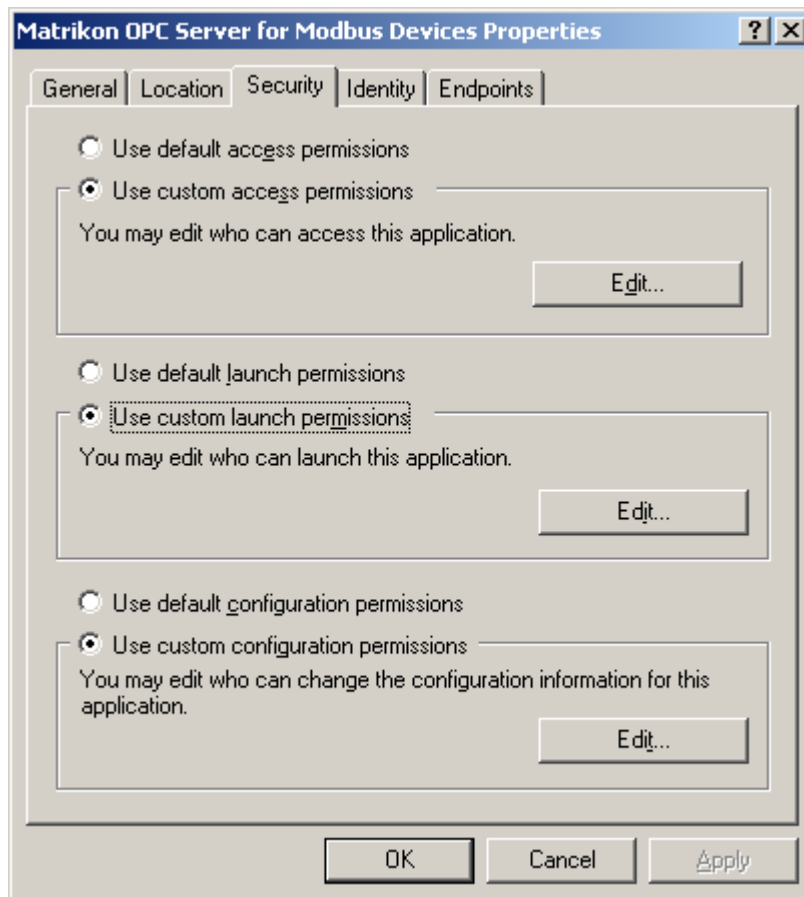
- 4) Select the server from the list under the Applications Tab.
(Do this for **ALL** OPC Servers, as well as OpcEnum)
- 5) Click on "Properties".



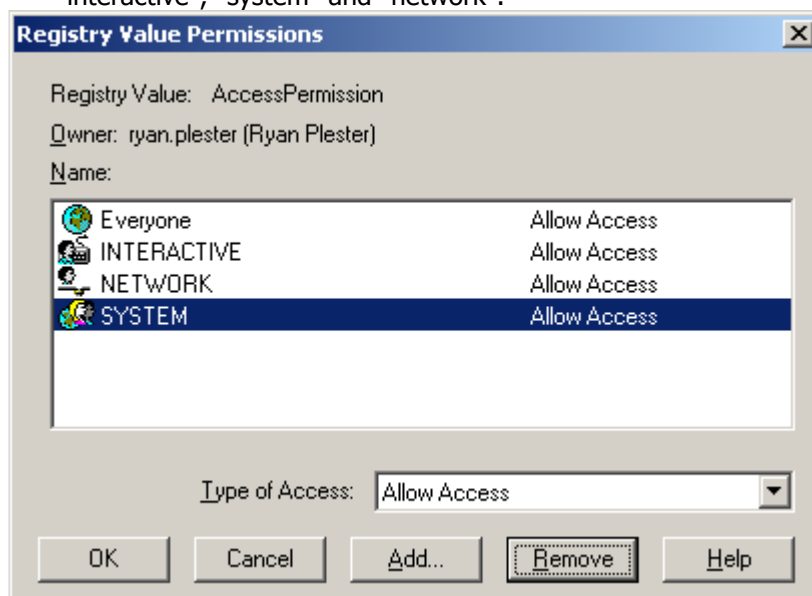
6) You can have your Authentication level to Default, or Connect.

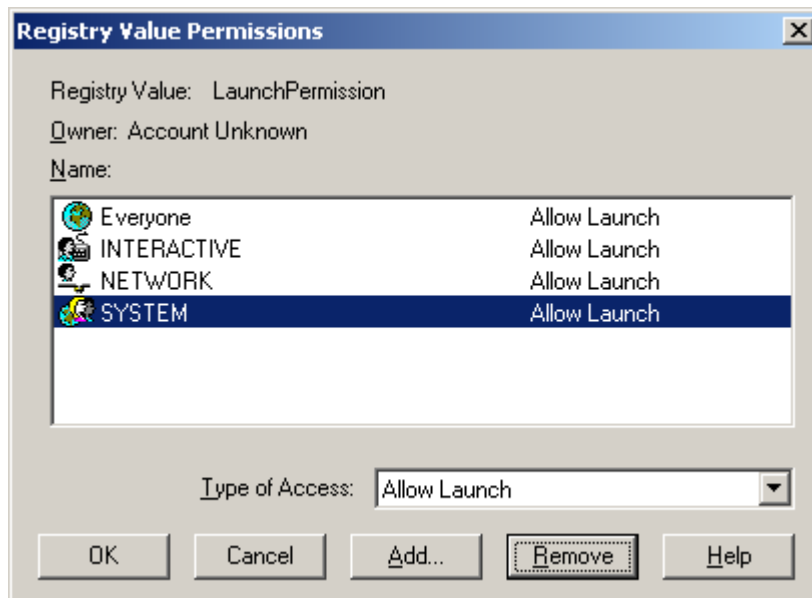


- 7) Under the "Security" tab, select "use custom access permissions" and "use custom launch permissions".

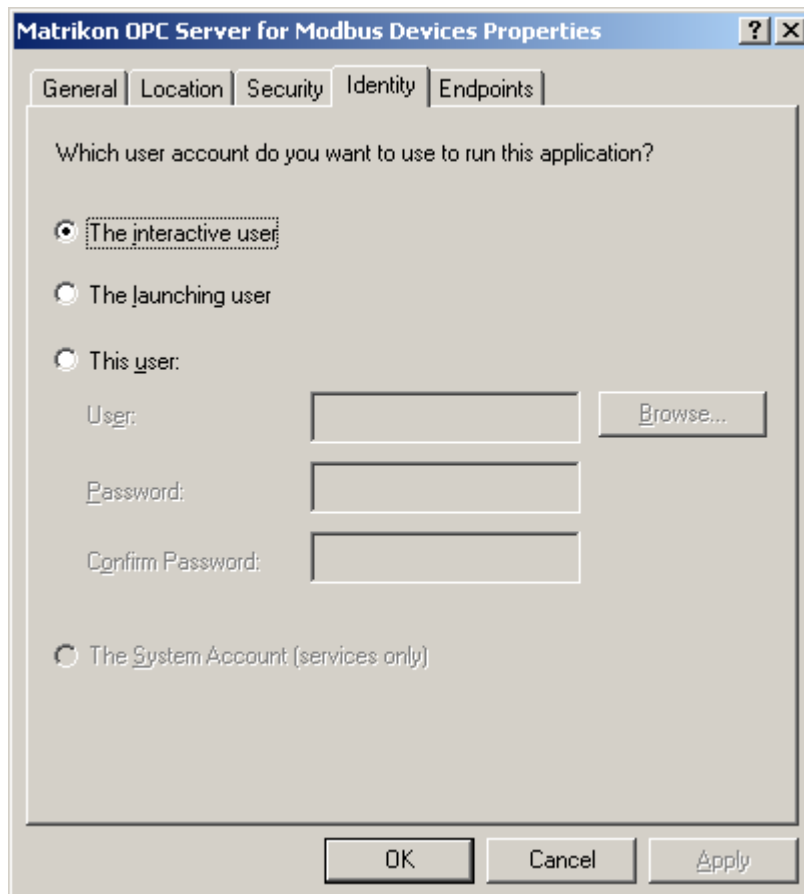


- 8) Edit both the launch permissions and the access permissions to include "everyone", "interactive", "system" and "network".

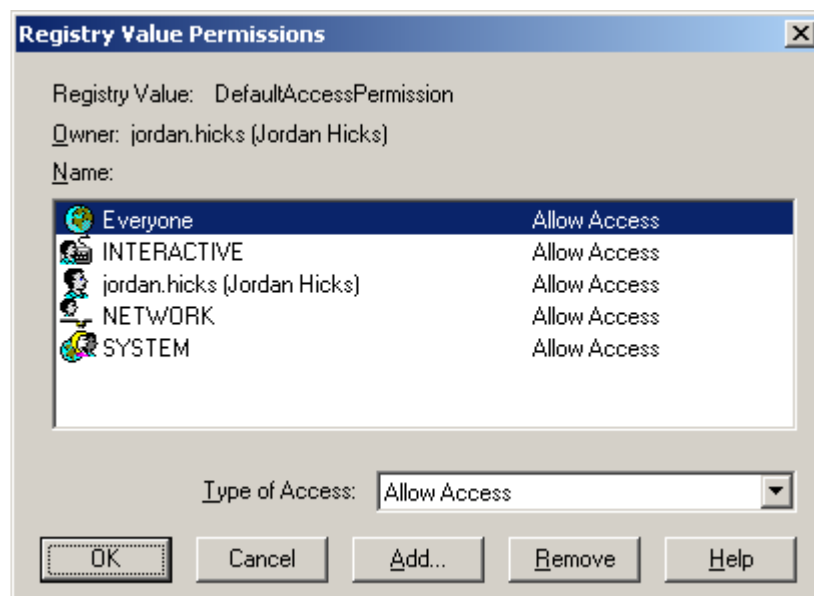
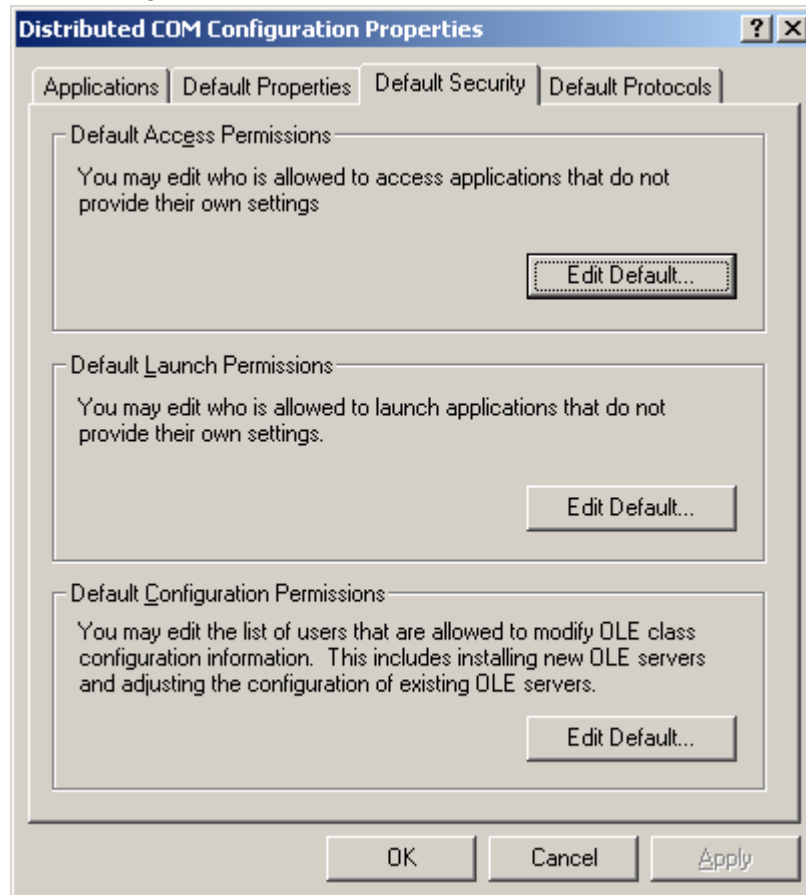


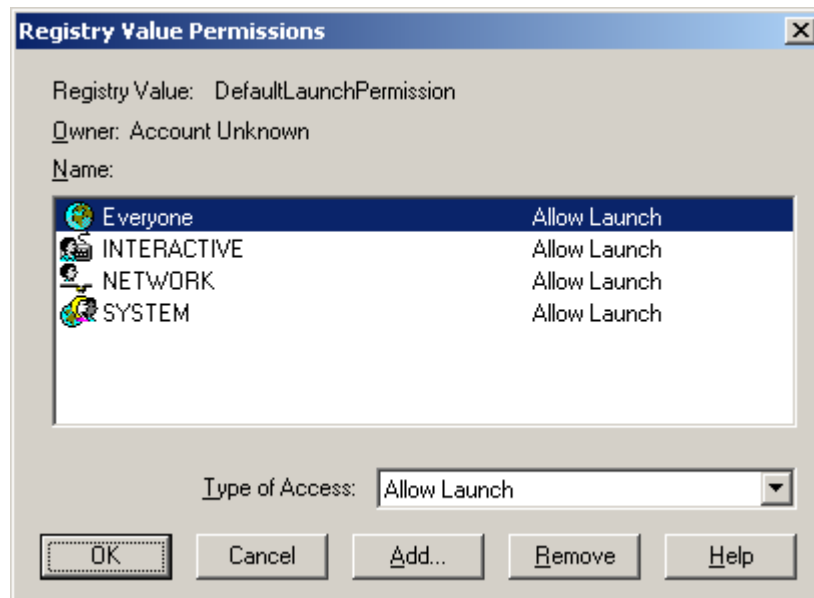


- 9) Under the identity tab select "the interactive user". Please note that services (such as OpcEnum) will be running under "The System Account".

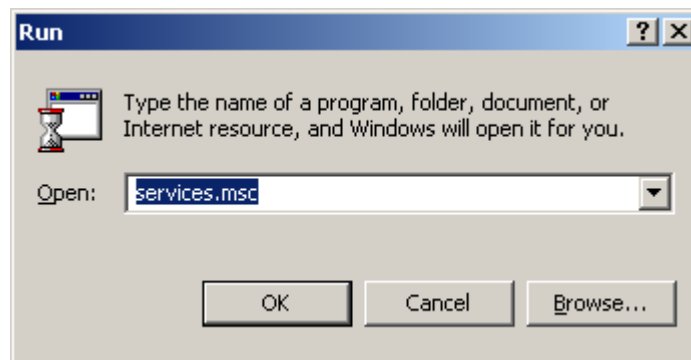


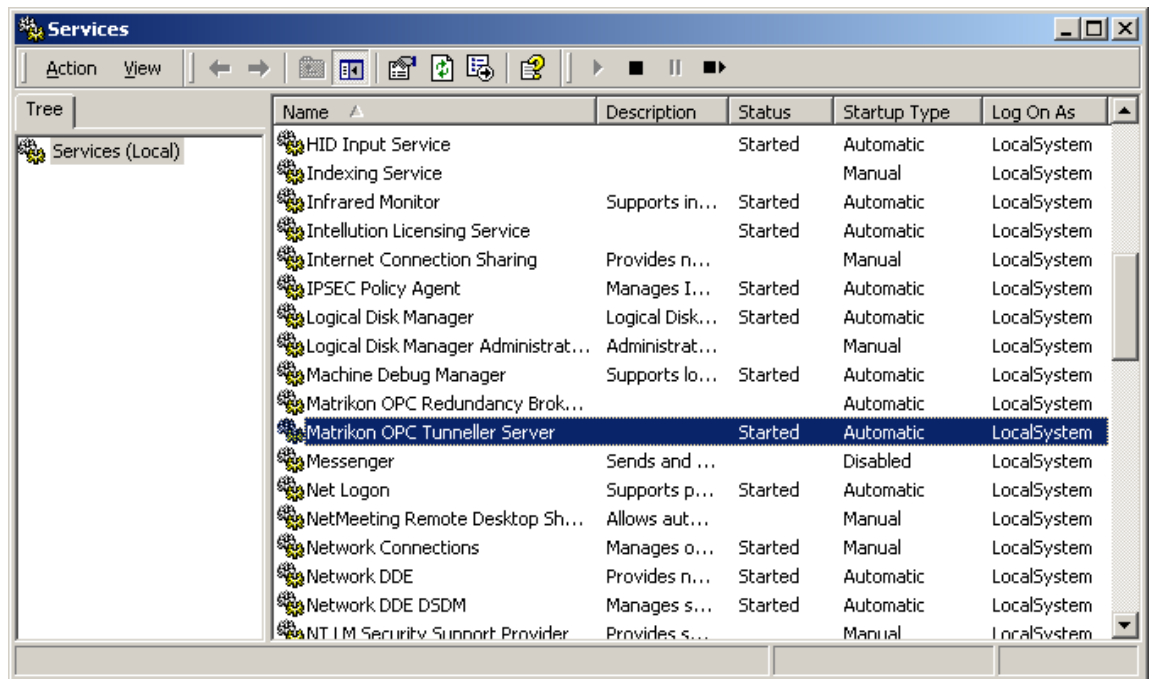
- 10) Please repeat steps 4 through 9 for ***each*** OPC Server installed, as well as OpcEnum.
- 11) Under the "Default Security" tab select both the Default Access Permissions and the Default Launch Permissions to contain: "EVERYONE", "SYSTEM", "INTERACTIVE", "NETWORK".





- 12) Now that this has been completed for both the Default Security Permissions, and the Custom Security Permissions for each OPC Server we can close down DCOMCNFG.exe.
- 13) Please shut down and restart all OPC Servers that are to be used. That means both those running as an application, and those running as a service.
- 14) To restart one running as a service please go: Start -> Run -> "Services.msc"





15) Please right click on the Server, and go "Stop".

16) Please right click again and go "Start", your service is now restarted and any changes to the DCOM have been updated.

Your **DCOM** is now setup to accept all incoming connections.

NOTE: DCOM has limitations for connectivity when operating on separate domains/workgroups. These steps may work but, depending on individual networks, additional settings and components may be required. Please contact OPC Support for additional information.

Phone: +1-780-945-4011
E-Mail: Support@MatrikonOPC.com
Web: www.OPCSupport.com