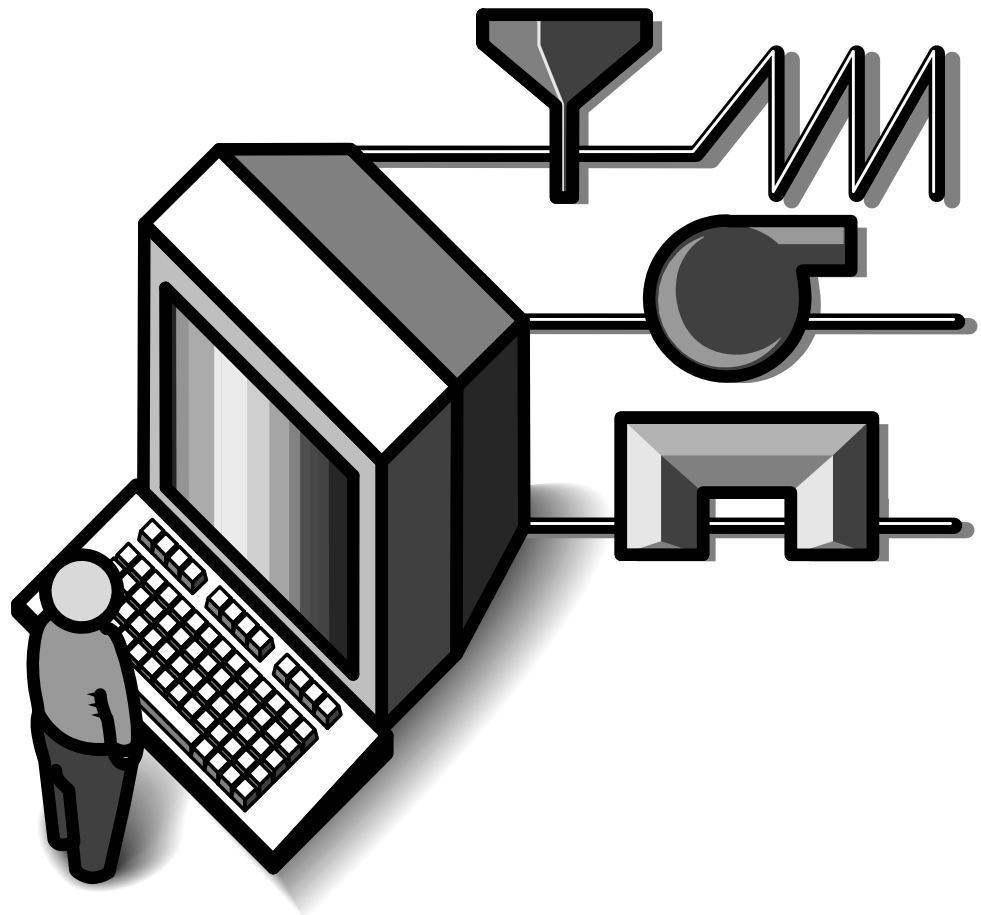


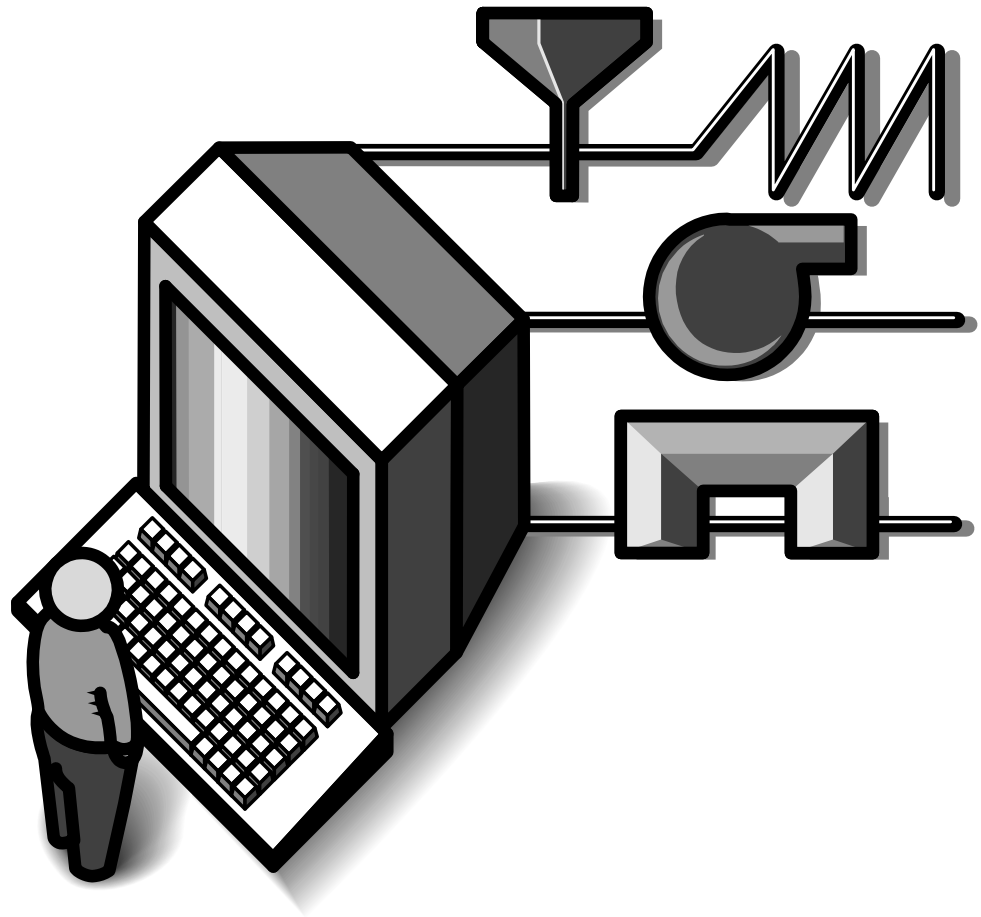


**ALLEN-BRADLEY**

# **ControlView™ for Windows™** (Cat. No. 9301) Release 4.0

Product Data





**Simplify even the most complex applications with the sophistication  
of ControlView's MMI Software — now available on Windows.**

You need a high-powered, yet easy-to-use software package to do your data acquisition and supervisory control. You demand quality support and services. Allen-Bradley ControlView for Windows software meets your demanding MMI needs.

Contents	Page
Benefits .....	1
Features .....	8
ControlView for	
Windows Family .....	6
Service and Support ..	7
Specifications .....	11

## Benefits

**Integrate your application smoothly.**

ControlView for Windows provides monitoring, control, and data acquisition functions in the user-friendly environment of Microsoft Windows software. Powerful new features include drag and drop, animation testing from the graphics editor, tabbed dialog boxes, menu/icon indicators, multiple levels of undo/redo, and support for all Windows fonts, including “true type.”

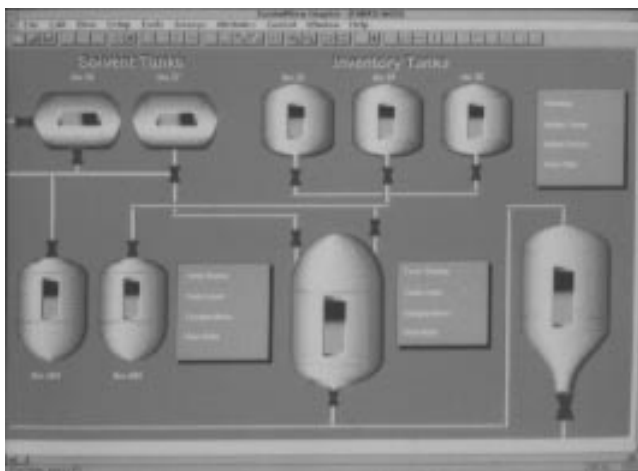
**Display real-time management reports.**

The entire platform is based on Microsoft standards, specifically Microsoft OLE (Object Linking and Embedding). Use OLE 2.0, for example, to link and embed Excel spreadsheets and charts into your ControlView graphics to display real-time management reports.

**Open for Business.**

ControlView for Windows provides an open system for accessing the static tag database and log files. For example, use Microsoft Access to visually connect two types of information, such as the alarm log and the static database. Then format and generate a report of this information. With this feature, you can generate reports with just the information you need or use the information in other reports.

**Design graphics using our graphics editor or use your own software package.** ControlView for Windows has its own graphics editor you can use exclusively to create even the most complex application graphics. However, if you have pre-existing graphics or want to use a different software package<sup>1</sup> to create application graphics — no problem, we’re compatible. You aren’t limited in your choice of Windows graphics file format.



<sup>1</sup>(such as CorelDRAW, Visio, Word, Paintbrush, AutoCAD, or PhotoStudio)

**One point of access to your entire ControlView process application.**

The Project Manager window displays your application in hierarchical form and lets you organize your development work into an easy-to-use infrastructure for editing and running ControlView process applications. From the Project Manager, you can also access the command line, where you can launch ControlView components and other Windows applications.

**Use system information in your application.**

New pre-defined system tags make internal system information available to your application. For example, a system tag automatically provides the total number of unacknowledged alarms in your application process during a particular period. Use these system tags as troubleshooting and information-gathering tools. System tags are available to retrieve information about memory usage, time, date, alarm status and more.

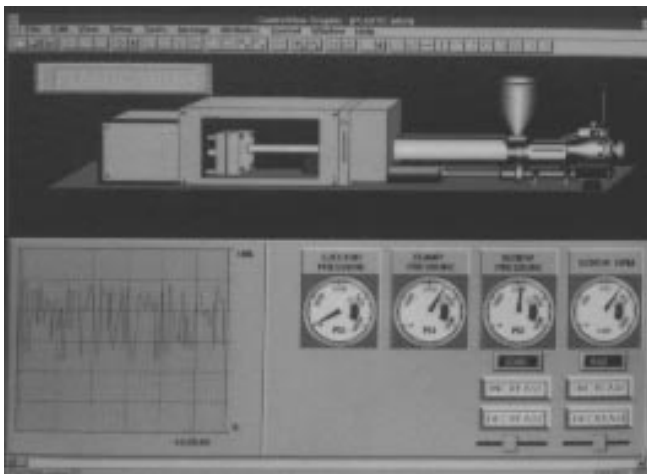
**Test graphic controls without running your process application.**

When you have finished applying control to an application graphic, you can test the control while in the editor. This option is especially helpful when you are in the early stages of process application planning and development.

**Customize your trend displays.**

With ControlView for Windows, you can now control the magnification of your trend graphs through customized buttons on your graphic screen. For example, you can modify the range of the Y axis to display two trend graphs with entirely different ranges. You can also change the scale of the X (Time) axis for displaying real-time and historical data.

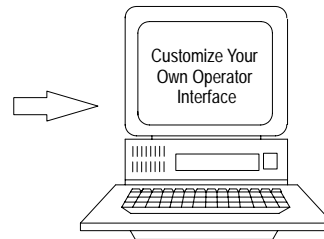
The trending feature lets you place multiple trends on top of one another for comparison. This is especially useful when you want to display historical and real-time trends (actual vs. predicted data).



## The ControlView for Windows Family

We offer combinations of the following ControlView for Windows products so you can select the ControlView for Windows bundle you want to use to create, test, and run your operator interface applications.

- Works
- Runtime
- Drivers



### ControlView Works

ControlView for Windows Works is an integrated software package that lets you develop man-machine interface programs to control and monitor your process application. The software's editors let you customize every detail of your application, as well as automate data collection and processing, data display, and operator control.

The ControlView Works software combines the functionality of our development and runtime systems and is available in 150-, 300-, 1,500-, or 32,000-tag packages. ControlView for Windows was developed specifically for industrial applications where data acquisition and supervisory control must be fast and reliable.

### ControlView Runtime

ControlView Runtime is a low-cost, high-performance operator interface software package that brings pre-emptive multi-tasking to the Windows environment. ControlView Runtime integrates the data acquisition, supervisory control, and management information functions of industrial information processing. It is ideal for OEMs, SIs, and large end users because of its flexibility, high performance, and low cost.

Use ControlView for Windows Runtime to run applications that you developed using ControlView for Windows Works. Available sizes include 300-, 1,500-, and 32,000-tag packages (All Runtime configurations are compatible with each other, so you can feel secure in your investment.)

### ControlView Drivers

Allen-Bradley PLC drivers, including INTERCHANGE functionality, let you to communicate with Allen-Bradley's complete line of programmable controllers (except the PLC-5/250 processor) over Data Highway Plus, Data Highway 485, DF1, Ethernet and TCP/IP networks.

## Allen-Bradley Support

In today's competitive world, when you buy a product, you expect that product to meet your needs. You also expect the manufacturer of that product to back it up with the kind of customer service and product support that prove you made a wise purchase.

As the people who design, engineer, and manufacture your MMI software, we at Allen-Bradley have a vested interest in your complete satisfaction with our product and services.

We offer worldwide support services, with over 75 sales and support offices, 512 authorized distributors, and 260 authorized systems integrators located throughout the United States alone, plus Allen-Bradley representatives in every major country in the world.

**We're global because we're local where you are.**

In addition, Allen-Bradley supports its software with phone support, warranties, and support extension programs, software newsletters, and product updates. Our Technical Software Support is available to help you when you call 216/646-6800.



Call your Allen-Bradley representative for:



- sales and order support
- technical product training
- warranty support
- support service agreements

Take advantage of the following features available in the base system:

## Features

ControlView for Windows software includes open format tag and alarm configurations. Tags and alarms are stored in an ODBC relational database format, giving you the flexibility to create and modify tags or alarms with other third-party tools, such as Microsoft Access®.

### ODBC Format

You can define multiple alarm summaries, with each one performing unique filtering, sorting, and display of alarm information. Then monitor alarm process incidents and log to .DBF file format and/or display the information on your screen.

### Alarming

This version also includes a global alarm acknowledge that lets you silence an alarm without acknowledging it. Another feature we've added is an alarm acknowledge bit that allows the PLC ladder logic to detect when the operator acknowledges an alarm.

Use the trend feature to generate trend graphs using real-time or historical data. Set-based trending lets you specify data that will be used for a specific trend (such as the data generated during a specific process batch) and significantly improves screen call-up time.

### Trending

ControlView for Windows can evaluate multiple files simultaneously. The number of events is limited only by the free memory within Windows.

### Event Detection

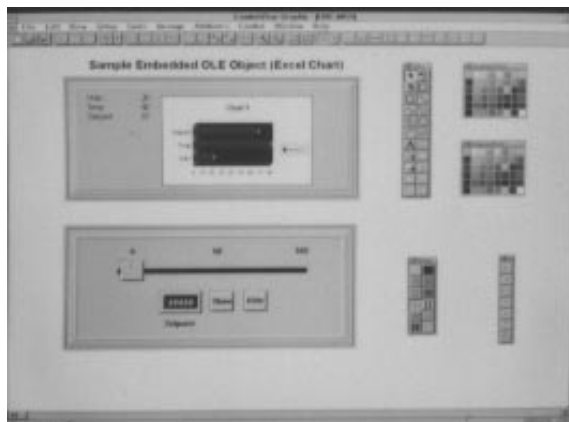
All logged data is stored in a standard .DBF format. You can use third-party software packages, such as Excel, Word, and Paradox to extract and report on this data. Choose between periodic on-change or on-demand (snapshot) logging.

### Data Logging

Protect your system by assigning user access codes to specific functions. This version also lets you disable [Ctrl]-[Alt]-[Del], the "Switch to" option, and standard Microsoft hot-keys, in effect locking other Windows applications out of your process.

### Security

<b>Communications</b>	Support for Allen-Bradley INTERCHANGE, Data Highway Plus, Data Highway 485, DF1, and Ethernet for Allen-Bradley programmable controllers. ControlView also supports available third-party DDE drivers for other programmable controllers and devices.
<b>PLC Scanning</b>	Network communications (Data Highway Plus, Data Highway 485, DF1, and TCP/IP) are optimized, resulting in scan durations of milliseconds instead of seconds.
<b>Device Tags</b>	In addition to DDE tags that rely on DDE for communications, ControlView for Windows offers device tags that use PLC drivers optimized for performance capacity and reliability.
<b>.DBF File Formats</b>	Collect data into standard .DBF format based on time, event, or demand. You can then manipulate historical data, including operator activity, system events, alarm messages, and tag values by using relational database tools for reporting, archiving, and data analysis.
<b>Control</b>	Animate the graphics by attaching a type of control such as rotation, size, or visibility. You can also use our Object Smart Path (OSP) to easily attach position to control any object. By using OSP you can set points on the screen with your mouse to configure the positioning of the object.
<b>Simultaneous Client and Server Capability</b>	ControlView for Windows can act both as a DDE server and a client. In server mode, ControlView can provide tag values and information to other DDE clients (other ControlView for Windows systems or 3rd party packages, such as PLC processor drivers).





ControlView for Windows is engineered to work with Windows for Work Groups™ 3.11 Net-DDE to provide a peer-to-peer networking solution. This network provides an open architecture for your customized process application.

**Peer-to-Peer  
Networking**

ControlView for Windows is compatible with the upcoming Windows95, allowing you to take advantage Windows95's increased performance and multi-tasking capabilities.

**Windows95**

Online help is available for additional information about a topic and provides hypertext and "see also" references. All PLC address syntax is included as a convenient quick reference when you are configuring your database tags.

**Online Help**

For static screens, such as a top-level bit-map screen, selecting and converting the screen to "wallpaper" provides a significant video performance gain. Once the static display is converted, you can add controlled objects.

**"Wallpaper" Feature**

Perform recipe management functions right from your graphic screens or as separate forms (without purchasing a separate recipe option). You can upload and download to disk and to a PLC processor.

**Recipe Management**

**Specifications****Personal Computer**

- 486 PC with 8MB RAM minimum (16MB or more is recommended for performance if running other Windows applications), 200MB hard disk, and math coprocessor

**PLC Processor**

- PLC-2
- PLC-3
- PLC-5/250 (in PLC-2 emulation mode)
- PLC-5 (Enhanced, Ethernet, Local I/O)
- SLC 500 family of processors

**Software**

- MS DOS version 3.3 or later and Windows 3.x or Windows for Workgroups 3.11

**Networking**

- Supports any Windows-compatible network



**ALLEN-BRADLEY**  
A ROCKWELL INTERNATIONAL COMPANY

Allen-Bradley has been helping its customers improve productivity and quality for 90 years. A-B designs, manufactures and supports a broad range of control and automation products worldwide. They include logic processors, power and motion control devices, man-machine interfaces and sensors. Allen-Bradley is a subsidiary of Rockwell International, one of the world's leading technology companies.



With major offices worldwide.

Algeria • Argentina • Australia • Austria • Bahrain • Belgium • Brazil • Bulgaria • Canada • Chile • China, PRC • Colombia • Costa Rica • Croatia • Cyprus • Czech Republic • Denmark • Ecuador • Egypt • El Salvador • Finland • France • Germany • Greece • Guatemala • Honduras • Hong Kong • Hungary • Iceland • India • Indonesia • Israel • Italy • Jamaica • Japan • Jordan • Korea • Kuwait • Lebanon • Malaysia • Mexico • New Zealand • Norway • Oman • Pakistan • Peru • Philippines • Poland • Portugal • Puerto Rico • Qatar • Romania • Russia-CIS • Saudi Arabia • Singapore • Slovakia • Slovenia • South Africa, Republic • Spain • Switzerland • Taiwan • Thailand • The Netherlands • Turkey • United Arab Emirates • United Kingdom • United States • Uruguay • Venezuela • Yugoslavia

World Headquarters, Allen-Bradley, 1201 South Second Street, Milwaukee, WI 53204 USA, Tel: (1) 414 382-2000 Fax: (1) 414 382-4444